

*„The definitive FORESTADENT  
Digital Orthodontics  
and Aligner Guide“*





## PAVING OUR WAY INTO THE FUTURE. #FOR US IT'S TRADITION.

You achieve the required precision when you know your craft. Like we have for over 115 years. We combine passion and ingenuity as well as aesthetics and precision mechanics. We use the tinkerer's mentality inherent in the people of the Black Forest for ever new ideas, which pave the way into the future for us, our customers and our employees.

Founded in 1907 by Bernhard Förster, the company grew with the production of jewelry and watches. For almost 50 years, we have been using the steadily growing experience and expertise in surface treatment of metals as well as the precision from watch manufacturing to serve the orthodontic community. With our innovative spirit, we create orthodontic products of the highest quality. To this day, we are family-owned and make our decisions for the long-term and with future generations in mind.

In orthodontics, FORESTADENT is associated with quality, innovation and precision. From our founding and production site in Pforzheim, Germany, we deliver our products and services to more than 120 countries worldwide.

Currently, approximately 250 of our more than 300 employees work in Pforzheim. We now generate more than 70 % of our sales abroad. All over the world, people trust in "Made in Germany" – or rather "Made in Black Forest" – and our expertise, which we have been constantly expanding for more than 115 years.

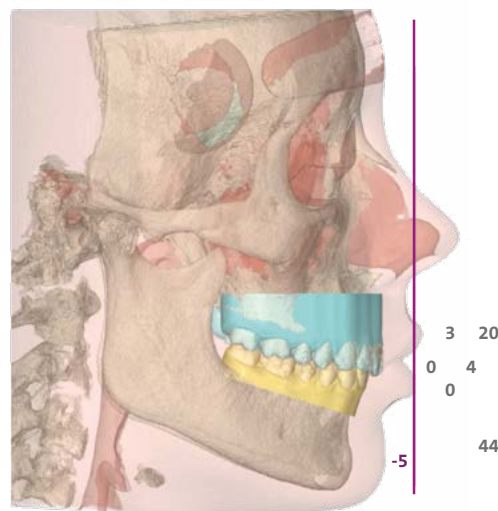
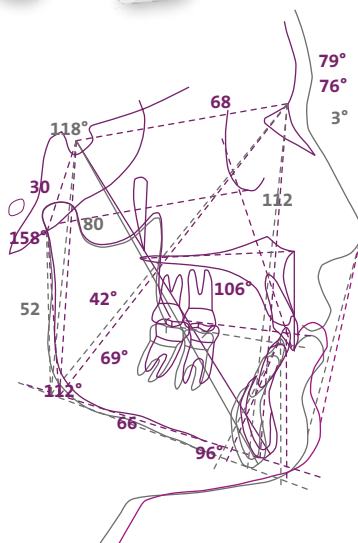


The company's quality management system meets the requirements of the legal regulations for medical device manufacturers according to international standards and is certified according to DIN EN ISO 13485:2016.

## Index

<b>1.1</b>	FAS Aligner System
<b>1.2</b>	Accuguide
<b>1.3</b>	Graphy
<b>1.4</b>	Graphy material
<b>1.5</b>	Uniz NBEE printer
<b>1.6</b>	Uniz SLASH 2 PLUS printer
<b>1.7</b>	Uniz U-Wash and U-Cure
<b>1.8</b>	Uniz U-Air and U-Detach
<b>1.9</b>	TRACK® V – thermoforming unit and auxiliaries
<b>1.10</b>	TRACK® P and TRACK® P-ci – Pressure thermoforming unit and auxiliaries
<b>1.11</b>	TRACK® – Thermoforming foils
<b>1.12</b>	TRACK® – Thermoforming foils

# FAS – Bringing a new Philosophy to the world of aligners



Aligners are already in use for more than two decades and despite all development most systems still have deficits with regards to treatment options and even more so with regards to the results.

With FAS you have now a system at hand, which is approaching an aligner treatment the same way as you would do it with a traditional orthodontic treatment with fixed appliances.

In our FAS aligner system the treatment planning is done by orthodontists. They look at the individual case and evaluate which treatment goals are realistic and how they can be achieved. And they are honest enough to tell you should a case exceed the limits of what is possible with aligners.

In addition the FAS Aligner System offers a number of advantages setting it apart from other providers.



[www.fasaligners.com](http://www.fasaligners.com)

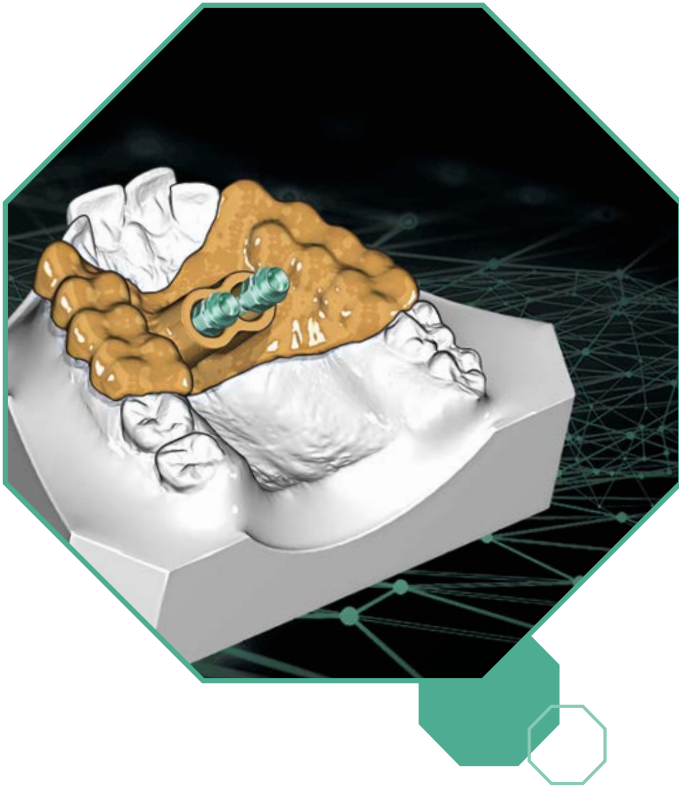
Please visit this website to register for the FAS Aligner System.

Furthermore you can find detailed information about the features of the FAS Aligner System, the packages and courses.





## Accuguide® – For a template guided insertion of OrthoEasy® Pal miniscrews



accu.  
guide



Accuguide® makes skeletal anchorage on the palate easier and more economical. The insertion guide enables a highly precise and template-guided placement of OrthoEasy® Pal Pins in the palate. The Orthodontic appliance, e.g. for molar distalization or palatal expansion, can be completely realized in just a few treatment appointments.

A specialist team of orthodontists and technicians implements your treatment plan and places the OrthoEasy® Pal Pins digitally in planning software. This positioning proposal is then uploaded in our FORESTADENT Portal.

Once the proposal is approved by you, we are 3D-printing the insertion guide and working model and send it to you.

The patient-individual Accuguide® Insertion Guide enables a template-guided and therefore precise placement of the OrthoEasy® Pal Pins in the palate. Your lab can fabricate the appliance on the working model and you can install it directly after the placement of the OrthoEasy® Pal Pins. Skeletal anchorage can hardly be easier and more economical.



[www.forestadent-portal.com](http://www.forestadent-portal.com)

Sign up for and order your your Accuguide® insertion guides easily in a few steps.

- User-friendly portal
- Easy data uploads
- Your digital orders at a glance



# Graphy



Graphy Tera Harz TC-85 is a biocompatible photopolymer that allows you to produce your aligners by direct printing. These aligners have a uniform thickness, which avoids the usual thinning of a thermoformed sheet. The uniform thickness, in turn, provides a consistent force level throughout the aligner and also a better fit of the aligner. The better fit and evenly applied forces provide a better grip, which in turn allows for better control over the teeth and ultimately more effective treatment.





In addition, the material has a shape memory. The aligners deform when they are inserted and removed. However, the effect of heat causes the material to return to the shape in which it was printed. The patient's body temperature is already sufficient for this. As a result, the shape memory of the aligner ensures that the force exerted remains constant over a longer period of time.

## Processing

Special processing is required for a special material. Therefore, prints made from TC-85 must not be cleaned in alcohol like other materials before curing, but must instead be spun in a spinner to remove excess material. To realize the full potential of TC-85 in terms of color and physical properties, the prints must then be light-cured in a THC2.

Designed specifically for Tera Harz, the THC2 uses an adjustable, high-energy UV LED light source and an integrated nitrogen concentrator. This combination of intense UV irradiation under a 95% nitrogen atmosphere ensures that the printed aligners exhibit the desired shape memory properties and are absolutely transparent.



Description	Content		Order No.
<p><b>TC-85 DAC (Direct Aligner Clear)*</b> 1 kg, bio-compatible photoreactive polymer with shape memory</p>	1		415-0001
<p><b>TC-85 DAW (Direct Aligner White)*</b> 1 kg, bio-compatible photoreactive polymer with shape memory</p>	1		415-0002
<p><b>S-Plastic Model</b> 1 kg of photoreactive resin, grey</p>	1		415-0042
<p><b>Tera Harz Surgical guide</b> 1 kg photoreactive resin, clear</p>	1		415-0050
<p><b>Tera Harz Cure THC2</b> Polymerization unit with attached nitrogen concentrator</p>	1		415-0101
<p><b>Tera Harz Spinner</b> Cleaning unit to remove excess resin from printed objects</p>	1		415-0003

\*Further resins available on demand.

# UNIZ – Currently the world’s fastest 3D printer



## Uniz NBEE

Its printing speed is currently unbeatable – it prints 6 aligner models in approx. 5 minutes\*. Its patented liquid cooling system ensures a stable printing process with very high accuracy.

The patented Low Force Stereo Peel technology of the resin tank in combination with a collimated light source with high power (16 mW/cm<sup>2</sup>, 95 % uniformity) and the active monitoring of the reaction temperature create ideal conditions for fast and high-quality results.

\* Depending on height of model



Uniz NBEE is fully compatible with Graphy resins.

Order No.	Content	Description
999-4000	1	<b>Uniz NBEE 3D-Printer</b> incl. resin tank, replacement for LCD module, protective foils for the projector screen, installation material and tools, 1 bottle of model resin; 220 V, 3A, 50 Hz
999-4002	1	<b>Uniz NBEE 3D-Printer</b> incl. resin tank, replacement for LCD module, protective foils for the projector screen, installation material and tools, 1 bottle of model resin; 110 V, 6A, 60 Hz (USA/Japan/LatAm)
999-4001	1	<b>Uniz NBEE Spare tank</b>



## Uniz SLASH 2 PLUS

SLASH 2 PLUS is a further developed model of the UNIZ desktop printer and also impresses with its speed. In the laboratory, values of up to 250 mm/hour are achieved. In other words, it prints 6 aligner models in about 18 minutes\*.

Like the NBEE, the SLASH 2 PLUS also features the patented liquid cooling system, which ensures a stable and reliable printing process. Thanks to an even more powerful LED light source (12 mW/cm<sup>2</sup>) compared to the previous model, almost all dental resins available on the market, e.g. for direct print aligners, dental models, surgical guides and also IDB trays and nightguards, can now be processed on the SLASH 2 PLUS.

\* Depending on height of model



Uniz SLASH 2 PLUS is fully compatible with Graphy resins.

Description	Content	Order No.
<b>Uniz SLASH 2 PLUS 3D-Printer</b> incl. resin tank, protective foils for the projector screen, installation material and tools, 1 bottle of model resin; 100–240 V, 6A, 50/60 Hz	1	999-4010
<b>Uniz SLASH 2 PLUS Spare tank</b>	1	999-4011
<b>Uniz SLASH 2 PLUS Cover for resin tank</b>	1	999-4012



## U-Wash – Effective 3D print cleaning for flawless results

### Quick cleanliness in just 6 minutes (2 cycles)

With an ultrasonic generator with an output of up to 2500 mW/cm<sup>2</sup> and an optimized 40,000 Hz chamber resonator, you can achieve thorough cleaning in record time.

### Simple application, high efficiency

Easy model cleaning with no moving parts in the chamber and intuitive operation via touchscreen with customizable modes.

### Economical in consumption

Different containers for different quantities and applications enable economical cleaning with less IPA. The chamber uses water instead of alcohol to transfer the standing wave. Only a small amount of isopropanol is required for the actual cleaning in the containers.



## U-Cure – Revolutionizing 3D printing

### Ultimate LED polymerization unit

With 120,000 mJ/cm<sup>2</sup> and 90% uniformity, U-Cure sets new standards for speed and quality in 3D printing.

### Fast curing in 1 minute

Thanks to the algorithm-optimized LED arrangement, U-Cure cures materials in just 1 minute - precisely and reliably.

### Precise performance from all angles

Multidirectional UV light and multi-angle reflectors guarantee top performance regardless of placement.

### Durable and low-maintenance

The LEDs have an operating time of up to 20,000 hours. The corrosion-resistant full metal construction ensures a long service life.

## U-Air – Whisper-quiet reduction of unpleasant odors

3D printing with resin sometimes causes very unpleasant odors. With U Air, you can reduce unpleasant odors to a minimum. For a more pleasant working environment.

### Large air volume

Brushless centrifugal motors ensure effective air exchange.

### Effective filter unit

U Air directly vents the installation space of the NBEE. A combination of fleece, HEPA and activated carbon filters in the air purification cartridge removes odors and even resin particles from the air.

### Low noise

The integrated sound insulation ensures a pleasantly low noise level

### Fan speed control

Infinitely adjustable air volume as required.



## zDental Model Gray V2

zDental Model Gray V2 is a high-precision material specially developed for dental applications such as conventional dental models, removable dies, detailed orthodontic models, acrylic denture bases, etc. The material offers high accuracy, excellent processing properties and a good balance of stiffness and toughness.

zDental Model Gray V2 is necessary to exploit the unsurpassed speed potential of the NBEE\*.


\*6 sprockets in just 5 minutes



## TRACK® V – Thermoforming unit

Order No.		Content	Description
900-2000		1	<b>TRACK® V</b> Vacuum thermoforming unit, 230 V
900-2110		1	<b>TRACK® V</b> Vacuum thermoforming unit, 100 V, Japan
900-2115		1	<b>TRACK® V</b> Vacuum thermoforming unit, 115 V, USA


## TRACK® V – Auxiliaries

Order No.		Content	Description
408-0706		1	<b>Occluform for TRACK® V</b>
900-2001		1	<b>Filling granules,</b> refill package, 1.3 kg
900-2016		1	<b>Sealing for foil reception</b>
900-2017		1	<b>Sealing for form pot</b>
900-2018		1	<b>Finishing set TRACK®</b> for cutting and finishing TRACK® foils

## TRACK® P and TRACK® P-ci – Pressure thermoforming unit

Description	Content		Order No.
TRACK® P Pressure thermoforming unit, 230 V	1		900-2300
TRACK® P Pressure thermoforming unit, 100 V, Japan	1		900-2310
TRACK® P Pressure thermoforming unit, 115 V, USA	1		900-2315
TRACK® P-ci with integrated compressor Pressure thermoforming unit, 230 V	1		900-2400
TRACK® P-ci with integrated compressor Pressure thermoforming unit, 100 V, Japan	1		900-2410
TRACK® P-ci with integrated compressor Pressure thermoforming unit, 115 V, USA	1		900-2415

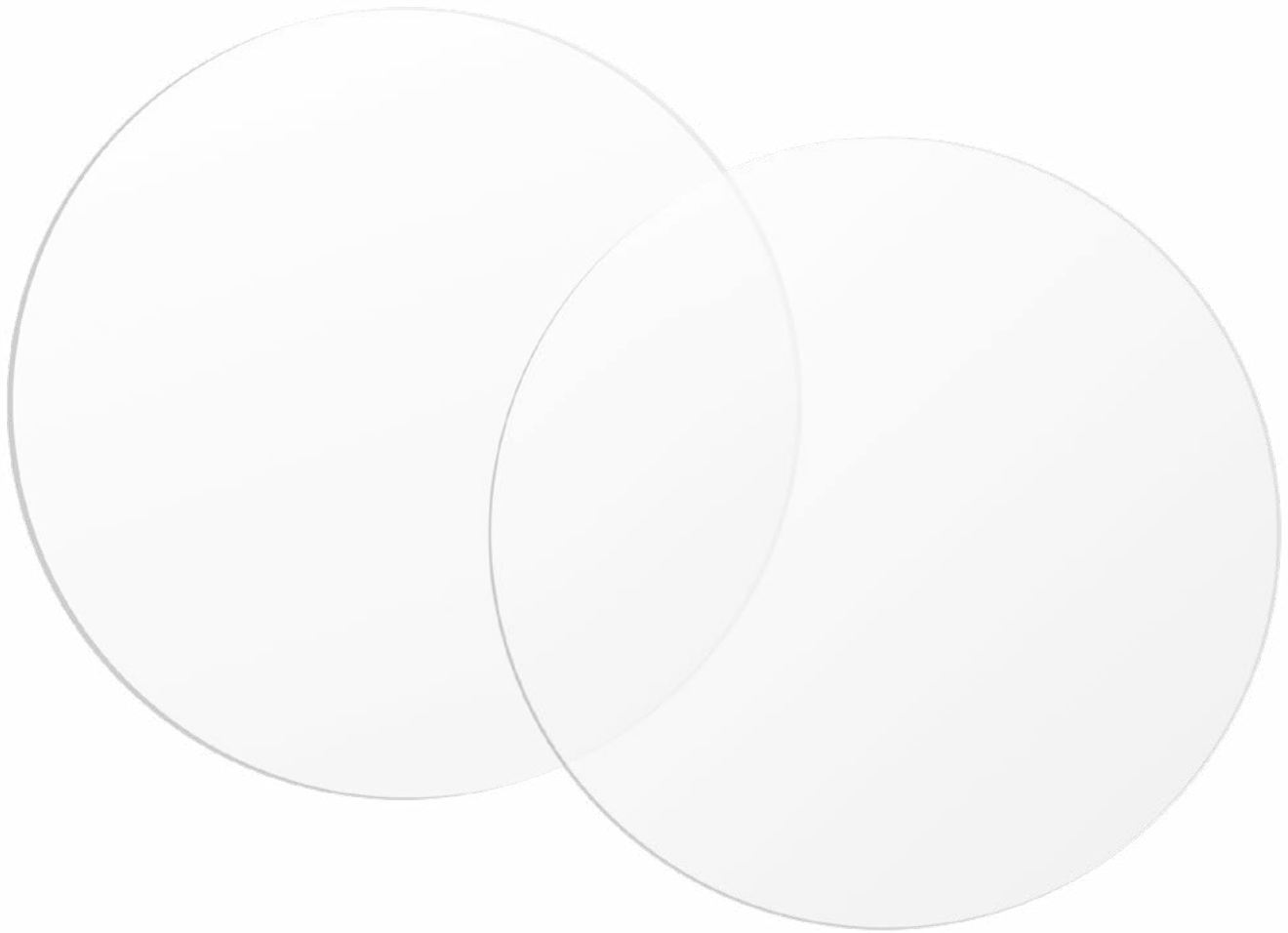
## TRACK® P and TRACK® P-ci – Auxiliaries

Description	Content		Order No.
Foil securing ring	1		900-2301
Foil holder	1		900-2302
Form pot	1		900-2303





## TRACK® Thermoforming foils



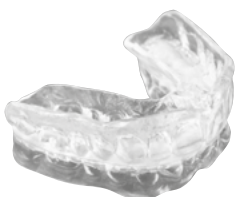
### Fast processing due to integrated separating foil!

Track® A and B cut down on several processing steps: the use of separating liquid or a separating foil and manual preparation is not required because Track® A and B have an integrated separating foil.



### No bond enhancing agent required!



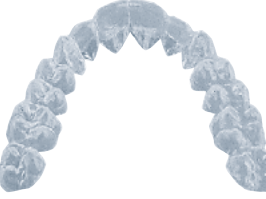


Track® A and Track® B thermoforming foils do not require bond enhancing medium to bond to acrylic (Forestacryl).



### Superior thermobonding characteristics!

Better thermobonding when separately processed parts of an appliance are joint together i.e. snoring appliances and positioners. The improved performance during thermobonding reflects the use of superior materials in the manufacturing process of Track® E.

# TRACK® – Thermoforming foils

Description	Application	Content	Thick-ness	Bonding to acrylic		Order No.
<b>Track® A</b> hard (PETG) ø 125 mm, transparent	Bite, bruxism and stabilisation splints, correction splints (aligner), anti-snoring splints	100	0.5 mm	yes		408-0105
		100	0.6 mm			408-0106
		100	0.8 mm			408-0108
		100	1.0 mm			408-0110
		50	1.5 mm			408-0115
		50	2.0 mm			408-0120
<b>Track® B</b> Double layer (TPU/PET-G) ø 125 mm, transparent	Bite, bruxism, correction splints (aligner), anti-snoring splints	30	2.0 mm	yes (on hard side)		408-0220
<b>Track® C</b> soft (PE) ø 125 mm, transparent	Placeholder for drug carrier / bleaching trays in combination with a hard splint	100	0.5 mm	no		408-0305
	Inner layer of transfer splints, in combination with hard splint	100	1.0 mm			408-0310
<b>Track® E</b> soft, rubbery (EVA) ø 125 mm, transparent	Soft splint, inner layer of bracket transfer splints, in combination with hard splint	50	1.5 mm	no		408-0515
	Positioners, soft splints, bracket protection splints	50	2.0 mm			408-0520
		30	3.0 mm			408-0530
<b>Track® bleach</b> (EVA) ø 125 mm, transparent	Bleaching and fluoridation trays, in combination with placeholder foil	100	1.0 mm	no		408-0610



**FORESTADENT Limited**

Unit 1 Crossinglands Business Park,  
Salford Road  
Aspley Guise  
MK17 8HZ

Phone: 01908 227851  
[info@forestadent.co.uk](mailto:info@forestadent.co.uk)  
[www.forestadentuk.com](http://www.forestadentuk.com)