





Distal End Cutter **EVER** Fine

- *Cut and hold distal end of arch wire.
- *Cemented carbide inserts provide high performance and long life of the tips.
- *Joint part has changed from 3pc(YS) to 2pc(EVER Fine). This change can reduce the problem of rust in joint part.

YDM
(Sharp.3 616L T/C · 606L T/C)



Company A

*With long handle and small head to ensure easy access in hard to reach areas.

Sharp.3 616S T/C
No.27616

606S T/C
No.27606

- *Cut up to
- Round wire .012"- .026"
- Rect. wire .016"x.016"- .022"x.028"

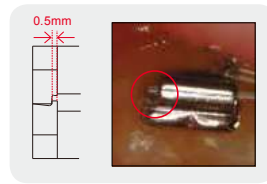
Sharp.3 616L T/C
No.27617

606L T/C
No.27607

- *Cut up to
- Round wire .012"- .026"
- Rect. wire .016"x.016"- .022"x.028"



Sharp.3 616S T/C
Sharp.3 616L T/C



606S T/C
606L T/C



Pin & Ligature Cutter **EVER**

- *Cut excess ligature wire.
- *Hard material inserts ensure cutting of ligature wire and elastic.
- *Joint part has changed from 3pc(YS) to 2pc(EVER Fine). This change can reduce the problem of rust in joint part.



615
with Hard Material
No.27615

*Cut up to .014" (ø0.35mm)




605
with Hard Material
No.27605

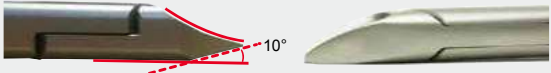
*Cut up to .012" (ø0.30mm)

Fine

- *To avoid breakage, insert hard material on the tip.
- *Fine curved shape provide performance to cut ligature wire on crowded area, dislocated area easily.



*10° angle and fine curve allow easy to access both pre molars and molars.

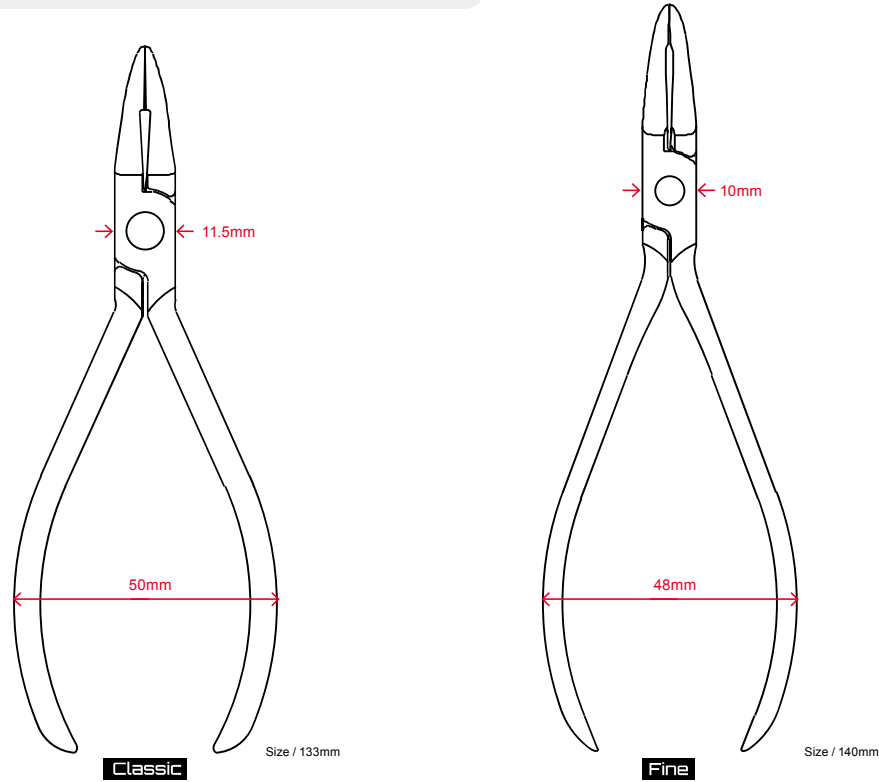





Orthodontic Pliers **EVER**

Classic Traditional and classical design fascinate artistic mind.

Fine Supple curved handle narrow box joint fascinate new generations.



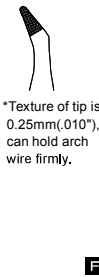
-Utility Pliers-



Classic

421 Weingart
No.27421

*Texture of tip is 0.25mm(.010"), can hold arch wire firmly.



Fine

441 Weingart
No.27441

*Texture of tip is 0.25mm(.010"), can hold arch wire firmly.

*Insert, remove the main wire.
*Multi purposes for tying ligature etc.

-Bending Pliers-



Classic

415 Tweed Arch
No.27415



Fine

455 Tweed Arch
No.27455

*Maximum wire capacity .022"x.028"
*Hold arch wire, apply torq, offset-bend, inset-bend.

-Bending Pliers-



Classic

417 Three Jaw
No.27417



Fine

457 Three Jaw
No.27457



*Maximum wire capacity .036"
*Quad Helix, lingual arch, activate of main wire.



Classic

418 Bird Beak
No.27418



Fine

458 Bird Beak
No.27458



*Maximum wire capacity .036"
*Bend retainer wire, clasp.

-Utility Pliers-



Classic

420 How
No.27420



*Insert, remove the main wire.
*Bend ligature wire, UA.



Fine

442 How
No.27442



Classic

422 Utility
No.27422



*Texture of tip is 0.25mm(.010"), can hold arch wire firmly.



Fine

440 Utility
No.27440



*Texture of tip is 0.25mm(.010"), can hold arch wire firmly.

*Insert, remove the main wire.
*Multi purposes for tying ligature etc.



Classic

414 Young
No.27414



*Maximum wire capacity .040"
*Bend retainer wire, adjust inner bow with three steps. (1.4mm, 3.0mm, 4.5mm in diameter)



Fine

454 Young
No.27454



Classic

416 Tweed Loop Forming
No.27416



*Maximum wire capacity .022"x.028"

*Round beak is shaped 3 layers of cylinders (1.25mm, 1.85mm, 2.26mm in diameter) can be used for closing helical loop, helical loop, omega loop.



Fine

456 Tweed Loop Forming
No.27456





Orthodontic Pliers **EVER**

*Traditional and classical design fascinate artistic mind.
*Matte surface can avoid reflection of pliers under bright light.

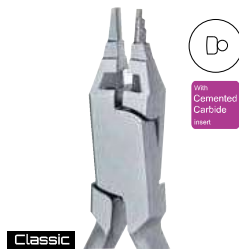
-Bending Pliers-



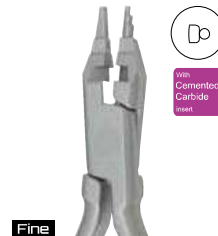
Classic
419
Nance Closing Loop
No.27419



Fine
459
Nance Closing Loop
No.27459



Classic
423
Kim T/C (with Cutter)
No.27423



Fine
453
Kim T/C (with Cutter)
No.27453

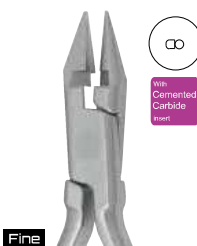
*Maximum wire capacity .022"
*With using each step (3.5mm, 4.5mm, 5.5mm, 6.5mm), arrange the loop wire, apply torque on MEAW loop.

*Maximum wire capacity .016"x.022"
*Cut up to .020"
*Bend MEAW loop.

-Bending Pliers-



Classic
424
Light Wire T/C (with Cutter)
No.27424



Fine
452
Light Wire T/C (with Cutter)
No.27452

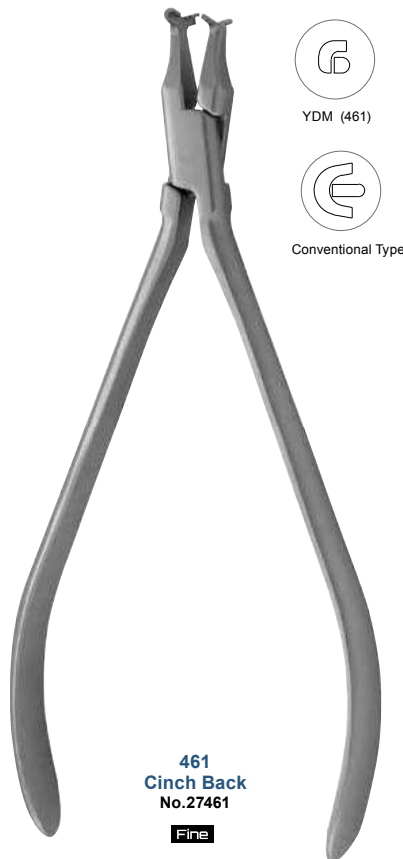
*Maximum wire capacity .020"
*Cut up to .020"
*Designed for circle hook, tear drop.



Fine
445
Step 1/2mm
No.27445

446
Step 3/4mm
No.27446

447
Step 1mm
No.27447



461
Cinch Back
No.27461

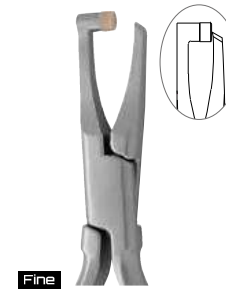
-Banding Pliers-



Classic
412
Band Removing
No.27412



Fine
443
Band Removing
No.27443



Fine
460
Band Removing L
No.27460



Classic
410
Band Contouring
No.27410

-Banding Pliers-



Classic
411
Band Margin
No.27411

-Debonding Pliers-



Classic
413
Bracket Removing T/C
No.27413



Fine
444
Bracket Removing T/C
No.27444

-Crimping Pliers-



Classic
425
Crimping
No.27425



Orthodontic Pliers **EVER** Fine

-Aligner Pliers-

- *With fine tips to ensure to insert into lingual or narrow part, crowded teeth.
- *With long handle to ensure to insert into lingual or narrow part, crowded teeth.
- *Matte surface can avoid reflection of pliers under bright light.
- *Supple curved handle fits female dentists.



448
Tear Drop
No.27448



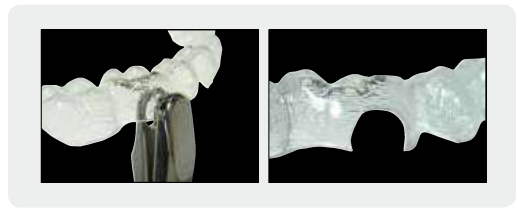
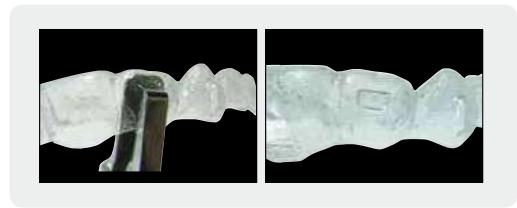
449
Vertical
No.27449



450
Horizontal
No.27450



451
Hole Punch
No.27451





Adams Pliers

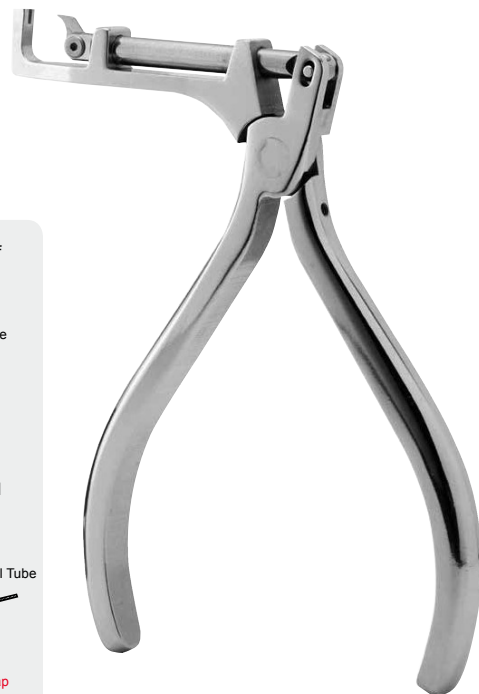
Universal T/C
No.22001



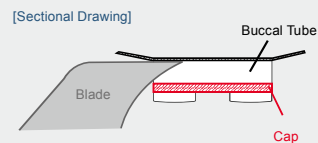
Convertible Cap Removing Pliers



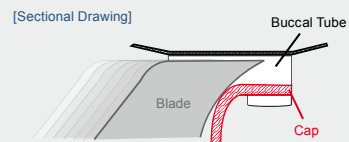
No.27934



1) Insert the blade edge parallel to cap from mesial side of buccal tube slot.



2) By gripping the handle, Move the blade to distal side and remove the cap easily.



*Please remove the fallen cap from a mouth.

Wire Cutter



*Cut retainer wire, clasp wire.



YS-601
No.22601

*Cut up to .032" (ø0.80mm)



YS-602
KI
No.22602

*Cut up to .045" (ø1.10mm)



YS-603
Standard
No.22603

*Cut up to .048" (ø1.20mm)



Tying Pliers

*Tie ligature wire on the bracket.



YS-506
No.22506
*Steiner Type.



YS-507
No.22507
*Coon Type.



YS-508
No.22508
*Used for applying both long and short type ligature wire.



Ligature Director



YS-704
Single End
No.22704

*Tuck excess ligature wire.



YS-704A
Twister
No.22754

*Tie ligature wire on the bracket with wing shape.
*With one instrument, two function-tucking and tying.



YS-704B
Double End
No.22755

*Tuck excess ligature wire.



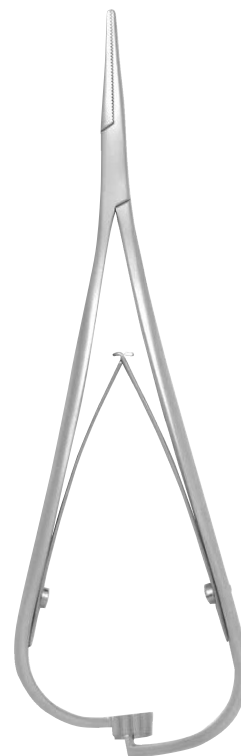
Arch Wire Director

No.27709



Module Pliers

*Put module on the bracket.
*With ultra thin tips, easy to insert into the mouth.



Str.
No.22509



Cvd.
No.22510

*For Lingual



with Groove Str.
No.22511



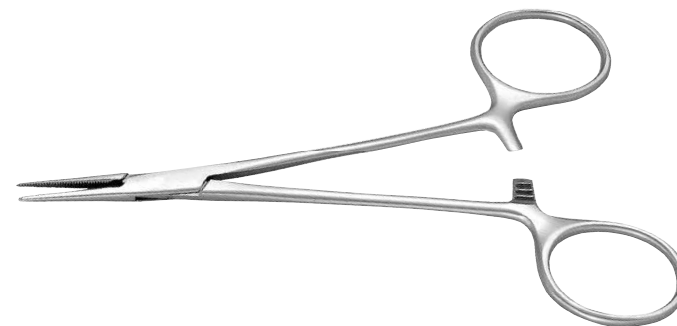
*With groove, module can move easily and give power on bracket fairly.



Mosquito Str.
No.22513



Mosquito Cvd.
No.22514



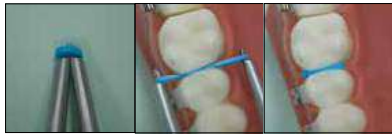


Separator

*Before applying band, used for placement of separating elastic.



YS-551
No.22551



Bracket Tweezers

*Hold firmly the bracket by groove at the tips.
*At the end of the handle with measure (3.5mm, 4.0mm, 4.5mm, 5.0mm) helps bracket height and angulation.



No.22761



Band Seater

*Set band by patient's own occlusal force.
*Tip can be replaced.



YS-703
No.22703

Surplus Cement Remover

*Remove surplus bonding material smoothly.



#1
No.13205



#2 for Posterior
No.13206

Band Pusher

*Insert band.

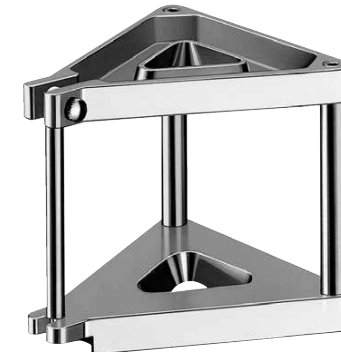


YS-701
No.22753



Articulator

-for Construction Bite-



YS-714
No.22714



Typodont Articulator

YS-802A
No.22822



*Wax form does not include.

-Example of Practicing with the Typodont Practice Model-



1) Attach the ORT various Wax Form to the Typodont Ocluder by applying molten wax with an instrument.



2) Remove the jaws with the black base as pictured.



3) Dip the jaws into 55-60°C warm water.



4) Lift the jaws from the warm water and dip into cool water. Observe the result.

Typodont Teeth



*Education tool to learn the appropriate orthodontic force and result of the teeth position.

*Also used for practice of placing the brackets and ligatures.

*Metal tooth root for quick heat conduction.

No.22834
(Parts 28 teeth)



Image



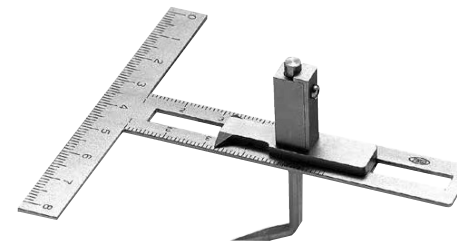
*Wax form does not include.

Model Measuring Device



Contents Main body, Chart (25 sheets)

YS-34 with Chart
No.22934

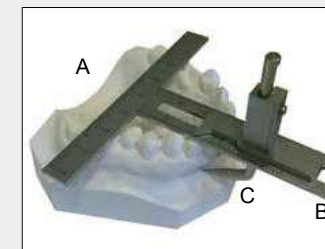


*This measuring device is for the purpose of measuring following length/ Width below on a tooth model, constituting T shape ruler and (vertical, horizontal) indicator needle. The indicator needle designed to slide on its vertical surface.

*This measuring device is designed to measure following (1),(2),(3).

For the measurement of (4) please use separately sold Orthodontic Caliper as the direction mentioned below.

- (1) Length of dental arch
- (2) Width of dental arch
- (3) Length of BASAL ARCH
- (4) Width of BASAL ARCH



[Direction of how to use]

- A.Horizontal part
- B.Vertical part
- C.Indicator needle

Standard deviation table for width of dental crown, dental arch, BASAL ARCH is also available.

- 1) Width of dental arch
With horizontal part A measure its distance between buccal sides of first premolar tooth.
- 2) Length of dental arch
Fitting in its base line of horizontal part A to the point of first molar teeth in distal part. Then measure the distance to incisal edge of a central incisor with vertical part B.
- 3) Length of BASAL ARCH
Setting horizontal part A as above picture indicates, slide the indicator needle C to fit in the bottom point of the root of a central incisor tooth.
- 4) Width of BASAL ARCH
Measure the bottom point of the root of first premolar tooth with Orthodontic Calipers.



Tension Gauge

*Measure the force of coil spring and elastic.



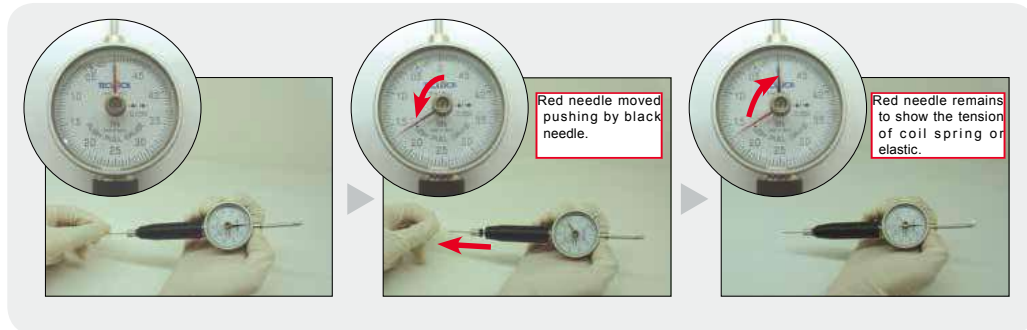
YS-31 5N
No.22955



YS-31D Dial (5N)
No.22930



*1N ≈ 100g

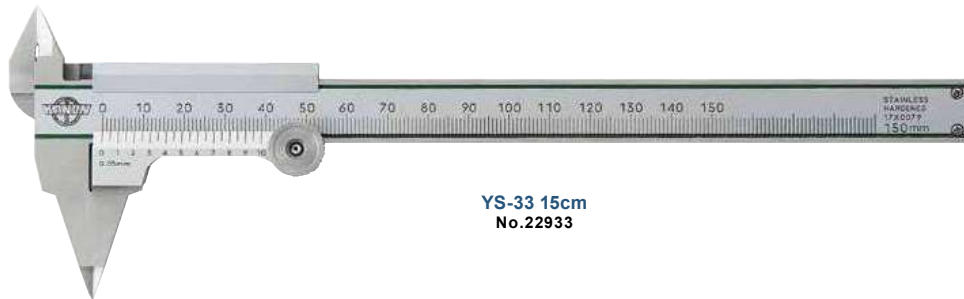


Red needle moved pushing by black needle.

Red needle remains to show the tension of coil spring or elastic.



Orthodontic Calipers



YS-33 15cm
No.22933



Boone Gauge

*Check position of bracket on tooth.
*Measure bracket height 4.5mm, 4.0mm and 3.5mm.



YS-39
No.22939



Handy Torch

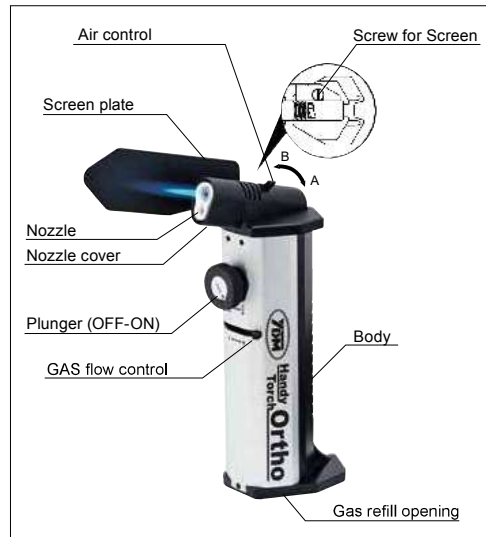
*Sharp flame is suitable for delicate work.
*Gas is empty at the time of delivery.



Ortho
No.27907

Size / W76.6xD54.5xH154mm

Name of parts



Specifications

- *Weight / 245g (with the screen board)
- *Gas Volume / 15g
- *Combustion Time / 80min.
- *Flame Temperature / 1300°C (blue flame)



*The head is given 70° angle to avoid direct dripping of wax on the nozzle when used lying down on the table.



Scraper



YS-706
No.22706



Locking Tweezers



YS-707S
No.22707



YS-708L
No.22708



Chin Cap



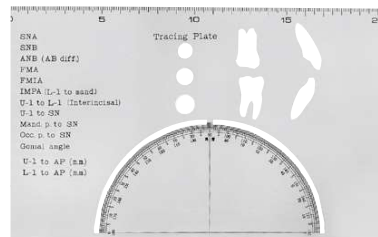
No.22868



Maxillary Traction
No.22869



Tracing Plate



YS-40
No.22940

Size / W210xD130mm



Color Tray

-Premium-

*Aluminium

*Color coded for easy identification.

*By an edge with height, the impression of a frenum or buccal mucous membrane can be taken firmly.

*Easily bendable for a custom fit.

*Impression materials stick to aluminium well because of features of aluminium itself, also they are difficult to be removed when in fitting.

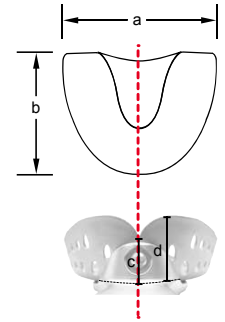
Upper



Pink

Blue

Red

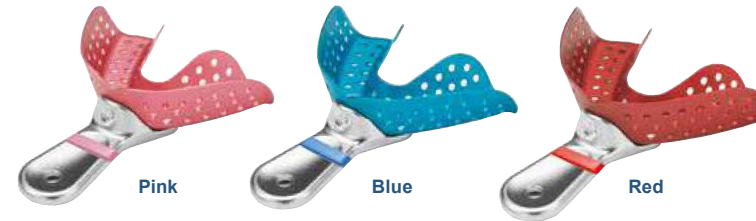


Gold

Violet

No.	Description	Size (mm)			
		a	b	c	d
19101	Pink	57	48	12	20
19102	Blue	62	54	12	20
19103	Red	68	60	12	22
19104	Gold	75	65	12	22
19105	Violet	84	70	13	22

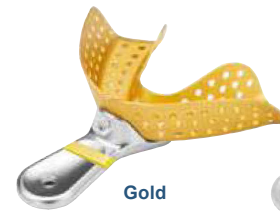
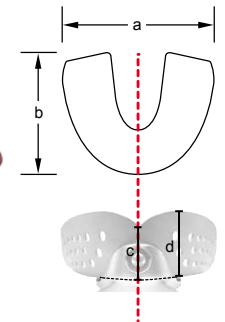
Lower



Pink

Blue

Red



Gold

Violet

No.	Description	Size (mm)			
		a	b	c	d
19111	Pink	62	44	15	20
19112	Blue	70	48	15	20
19113	Red	75	50	15	20
19114	Gold	82	53	17	22
19115	Violet	88	55	17	22